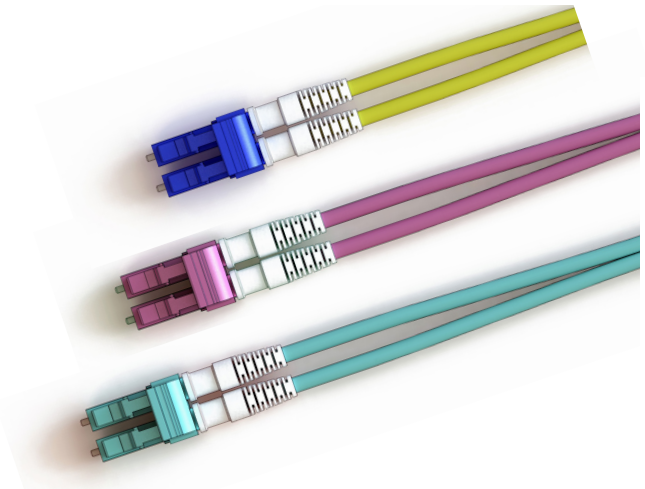


Lite Linke Patchleads

Our range of premium patch leads present an optimised, economically viable solution to near all applications, including enterprise, land and Datacom, whilst providing flexible interconnectivity to active equipment, passive optical devices and cross-connects. Terminated with our optimised range of physical contact and angled physical contact (APC) connectors, and manufactured with precision factory mounting and polishing techniques, they ensure the highest transmission quality for your solution.



Features & Benefits

- All fibre types available such as SM - G657A2, MM - OM1, OM2, OM3, OM4 and OM5
- Available with all connector types LC, FC, SC and ST (other connector types are available upon request)
- Standard cable dimensions 2.0mm (Please see specification section for more cable details)
- Machine polished and all factory tested
- Standard industry outer jacket colours (Please see specification section for more details)
- Short boots as standard to assist in cable management, other connector boots are available upon request

Specification

ELEMENT	CHARACTERISTIC
Fibre (ISO/IEC 60793)	OS2 = G657A2, OM3 + OM4
Outer Sheath Colour (LSZH)	OS2 = Yellow, OM3 = Aqua OM4 = Heather Violet
Outer Diameter (mm)	Simplex + Duplex = 2.0, Flat Twin = 2.8 tails, Overall 6.6
Operation Temperature	-40 ~ +80°C
Installation Temperature	-10 ~ +70°C
Connector Colour	OS2 = Blue, OM3 = Aqua OM4 = Heather Violet
Crush (N)	Simplex + Duplex = 1000, Flat Twin = 2000

Application

- Enterprise
- Datacom
- LAN and WAN
- FTTX

Connector Performance

Connector Type	Wave Length	Insertion Loss Max	Return Loss
Singlemode Connectors	1310nm 1550nm	0.25dB (Typical 0.12dB)	>60dB
Multimode Connectors	850nm 1300nm	0.25dB (Typical 0.12dB)	N/A

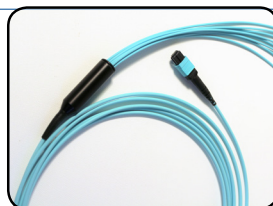
Available Accessories



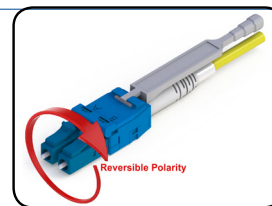
MTP® Containment



Cleaning Solutions



MTP® Harness Links



LC HD Switchable Uniboot



MTP® Trunks

*Please note, product specifications are subject to change in line with availability

Optical Fibre Specifications

Multimode Fibres

Multimode Fibres	Overall Bandwidth (MHz x km)		Max. Link Length** for 1 GBit/s (m)		Max. Link Length for 10 GBit/s (m)		Fibre Attenuation (dB/km)	
	850nm	1300nm	850nm (1000Base-SX)	1300nm (1000Base-LX)	850nm (10GBase-SR) (10GBase-SW)	1300nm (10GBase-LX4)	850nm	1300nm
EN 50173/ISO 11801								
50/125 µm								
OM3	>1500	>500	100	600	300	300	<2.7	<0.7
OM4 Laser Optimised	>3500	>500	1040	600	550	300	<2.7	<0.7

Singlemode Fibres

Singlemode Fibres	Chromatic Dispersion		Cut-off-Wave Length (cabled) (nm)	Point Discontinuity (dB)	Fibre Attenuation (dB/km)			Fibre Geometrical Properties (µm)		
	1310nm	1550nm			1310nm	1380-1386nm	1550nm	Mode-field	Cladding	Coating
IEC 60793/ EN 50173/ISO 11801										
9/125 µm										
OS2(ITU-T G.652D)	>3.5	>18.0	>1260	<0.1	<0.34	<0.31	<0.22	9.2 ±0.4	125 ±1	245 ±5

*Please note, product specifications are subject to change in line with availability